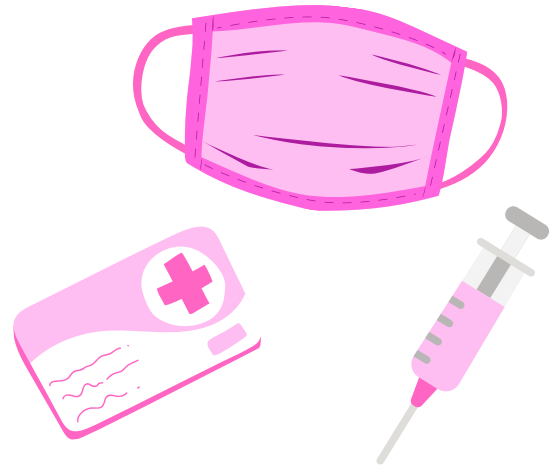


# COVID-19 VACCINE CLINIC



Vaccine: Moderna (first dose) OR J & J (single dose)

Wed, May 26th 3-6pm @ BT Community Center  
289 South Maple Ave, Basking Ridge NJ 07920



Make your appointment at  
[www.signupgenius.com/go/bthdmay26](http://www.signupgenius.com/go/bthdmay26)  
Need help? Call the BTHD Vaccine Line  
at 908-204-2522

# CLÍNICA DE VACUNACIÓN COVID-19



Vacuna: Moderna (primera dosis) O J & J (dosis única)  
Miércoles, 26 de Mayo - 3-6pm @ BT Community Center  
289 South Maple Ave., Basking Ridge NJ 07920

Concierte su cita en [www.signupgenius.com/go/bthdmay26](http://www.signupgenius.com/go/bthdmay26)  
¿Necesita ayuda? Llame a BTHD Vaccine Line at 908-204-2522

